



# ROCKY MOUNTAIN

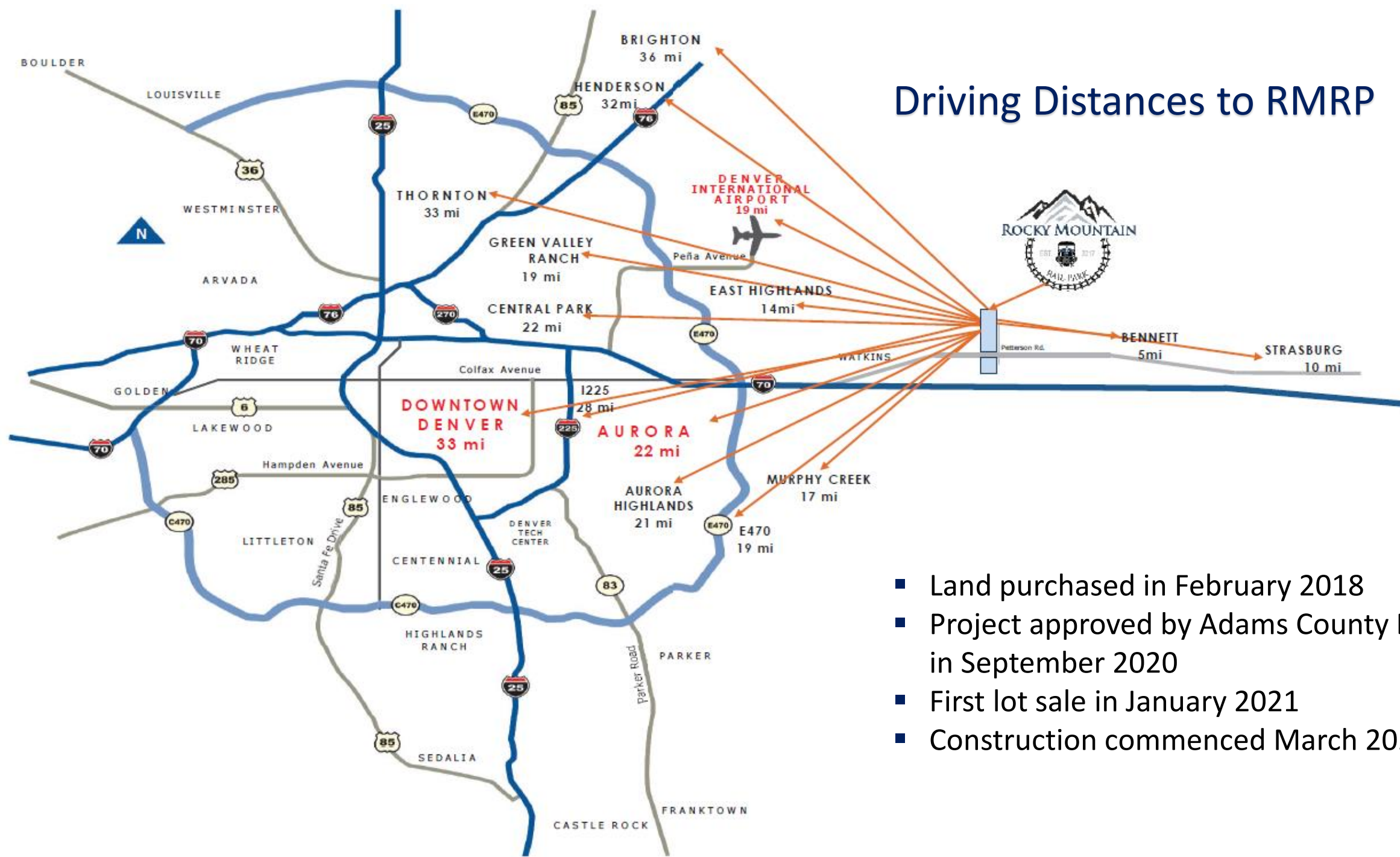
INDUSTRIALS





- Denver-based company
- Develop commercial/industrial projects
- Focus on transportation, construction materials, and commodities
- Owner of the Rocky Mountain Rail Park
- 620-acre commercial/industrial rail park
- Located 25 miles east of Downtown Denver
- Connected to the Union Pacific Railroad
- Construction is 95% complete





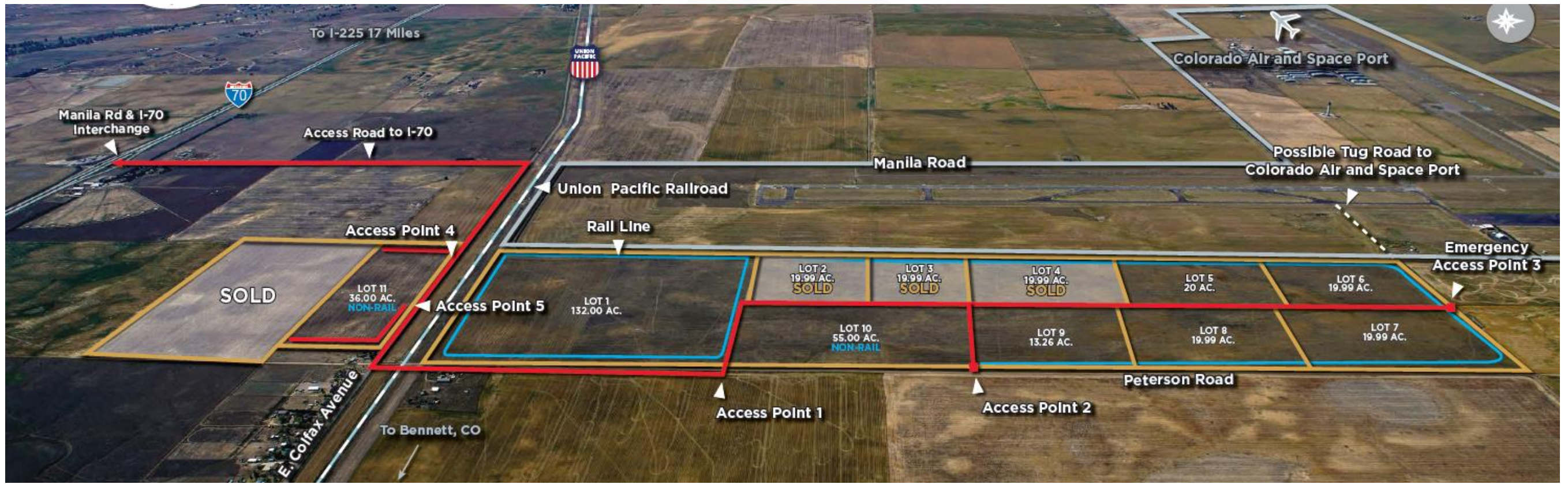
## Driving Distances to RMRP



- Land purchased in February 2018
- Project approved by Adams County BOCC in September 2020
- First lot sale in January 2021
- Construction commenced March 2021

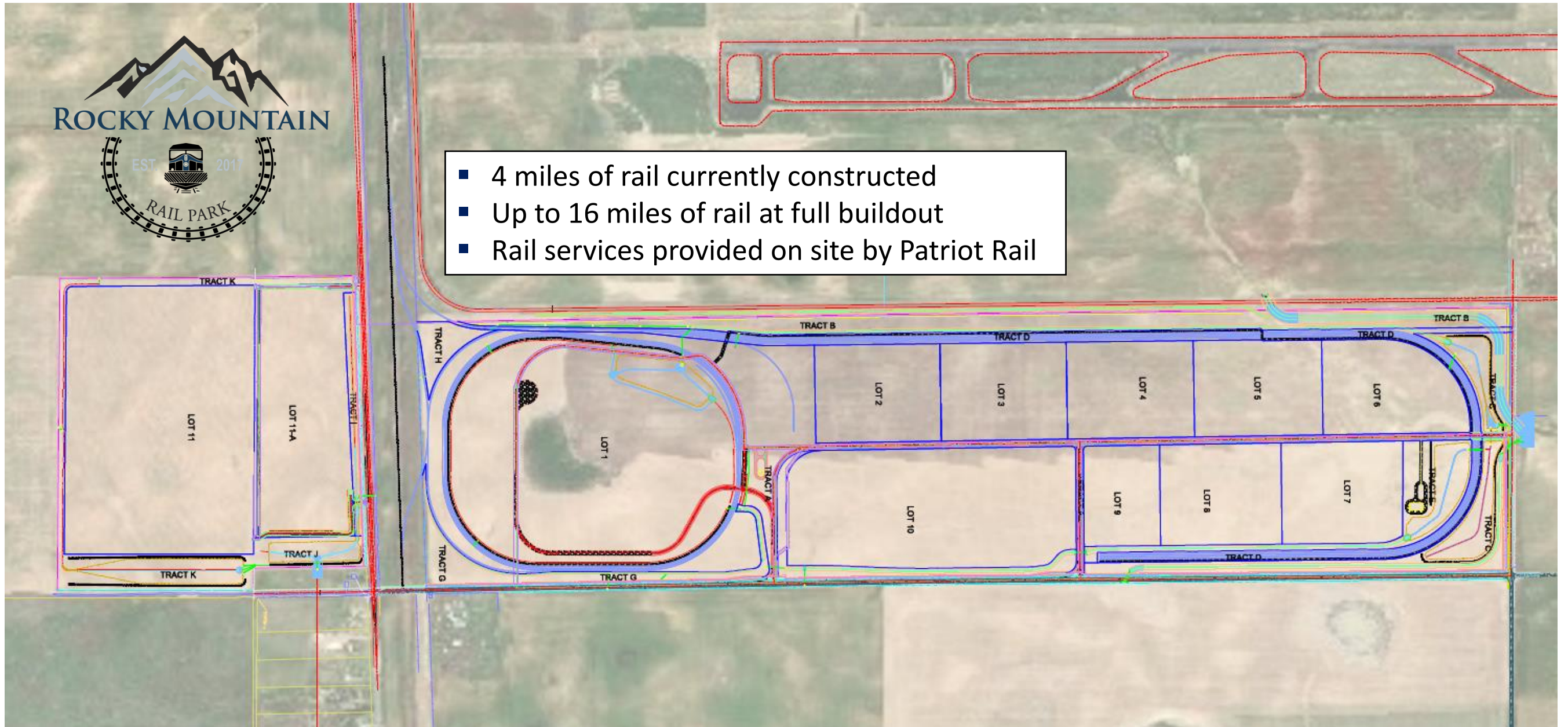


- 460 acres of saleable/leasable land, 316 acres remaining
- Interested companies are looking to build state of the art flagship facilities
- Excellent access to main transportation corridors (road, rail, air)





- 4 miles of rail currently constructed
- Up to 16 miles of rail at full buildout
- Rail services provided on site by Patriot Rail





- Water and wastewater are provided on site through the Rocky Mountain Rail Park Metropolitan District
- Regional stormwater management
- Road improvements to adjacent roadways (Colfax Ave. & Peterson Rd.)
- 500-1000 jobs estimated on site.





# Q&A

